



YOU+PACE=UNSTOPPABLE

www.psea.org/pace

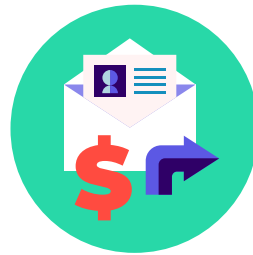
WHAT DO ELECTIONS HAVE TO DO WITH **YOUR JOB** & **YOUR SCHOOL**?



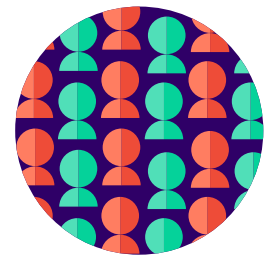
YOUR SALARY



YOUR UNION CONTRACT



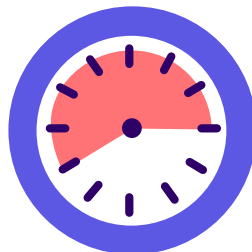
YOUR RETIREMENT & PENSION



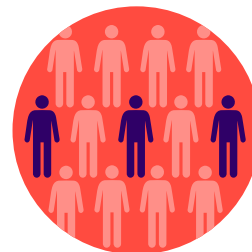
YOUR CLASS SIZE



YOUR WORKING CONDITIONS



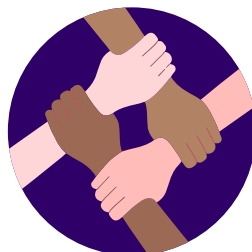
LENGTH OF YOUR WORKDAY



STAFFING SHORTAGES



STANDARDIZED TESTING



YOUR EMPLOYEE COLLECTIVE BARGAINING RIGHTS



YOUR DUE PROCESS



YOUR SCHOOL BUDGET

PSEA/PACE

POLITICAL ACTION COMMITTEE FOR EDUCATION

JOIN US!



www.psea.org/PACE

THESE WILL BE TOUGH FIGHTS, BUT PSEA MEMBERS CAN HELP FIGHT THEM—AND WIN.

Here's what you need to know:



What is PSEA-PACE?

PACE is PSEA's political action committee for education. Through PSEA members' voluntary contributions, PACE elects pro-public education candidates who influence your job and your school — from governor to local school boards.



Why politics?

Whether it's your local contract, your retirement, the teacher shortage or funding for building repairs — elected officials impact your job, your school and your future every single day.



How does PSEA-PACE Decide Which Candidates to Support?

PACE supports Republicans and Democrats. What matters is that a candidate is pro-public education. Candidate recommendations are made by PSEA members after an in-depth review and interview process.

Does supporting PSEA-PACE help stop the attacks on education?

Yes. By contributing to PACE, PSEA members help amass the financial resources necessary to elect pro- public education candidates and **hold all elected officials accountable.**



PSEA PACE
POLITICAL ACTION COMMITTEE FOR EDUCATION

JOIN US!



www.psea.org/PACE

This content is intended for use by PSEA members and their immediate families. PSEA-PACE supports friends of education in state and local elections. Contributions to PSEA-PACE are voluntary and members have the right to refuse to contribute without reprisal.

Contributions to PSEA-PACE are not deductible as charitable contributions for federal or state income tax purposes. Only U.S. citizens or lawful permanent residents may contribute to PACE. No dues dollars can be given to political candidates.