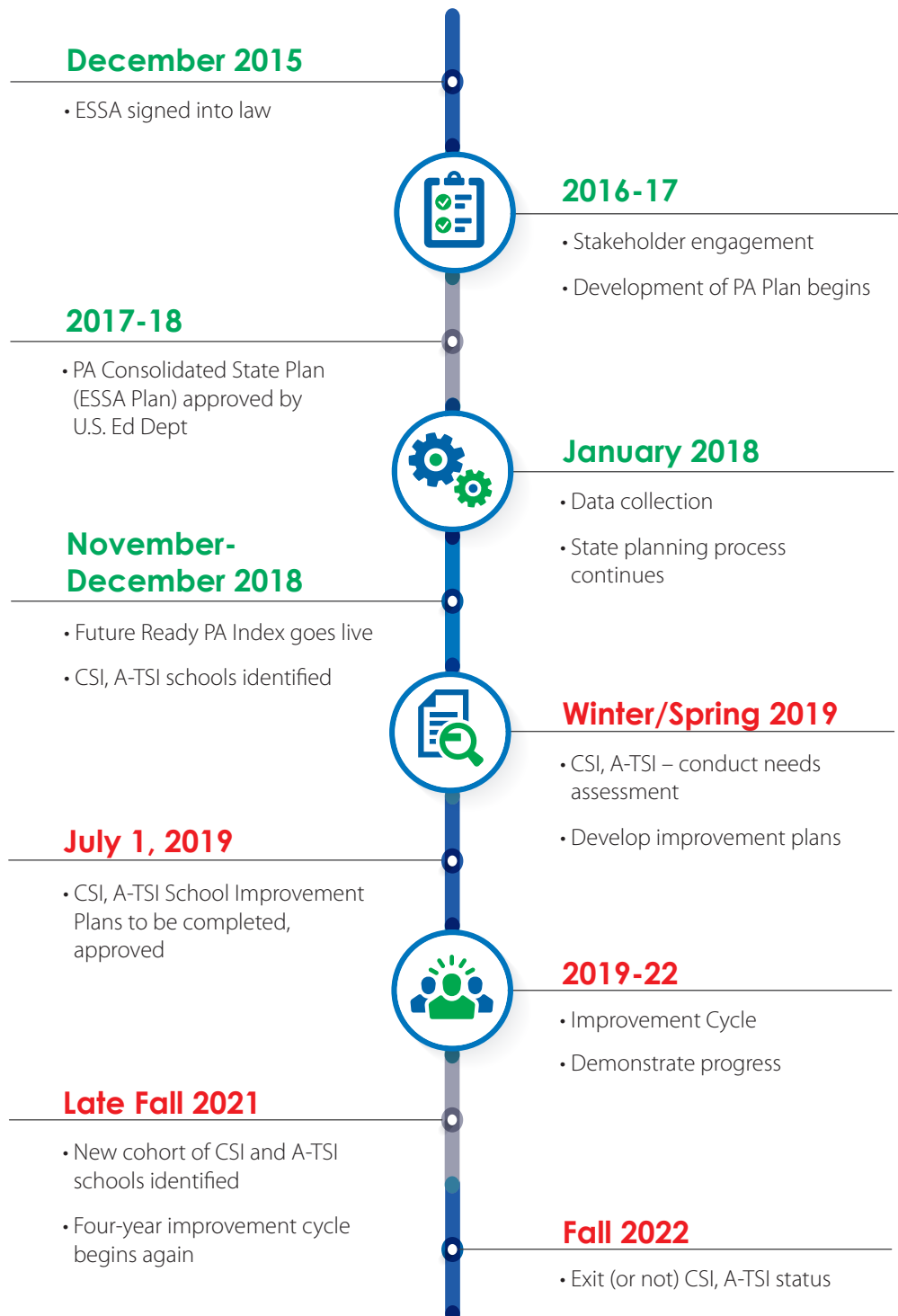


Are you in a CSI or A-TSI designated school? The time to act is now!

Learn more at www.psea.org/essa

PA's ESSA Timeline





Learn more at www.psea.org/essa

Frequently Asked Questions

What's happening with ESSA and why should I care?

In December, the PA Department of Education identified lower performing schools in need of comprehensive support and improvement (CSI) or additional support and improvement (A-TSI) under ESSA.

What happens now?

Schools with a CSI or A-TSI designation should already be examining the factors that led to these designations and be creating a plan to improve them to avoid being reidentified in 2021.

What can I do?

- Learn more about this issue and the designation criteria at www.psea.org/essa.
- Reach out to your school administrators to see if you can join your school's ESSA School Improvement Committee or find another way to get involved.
- Keep PSEA informed. Fill out the form below with your ESSA team member's name and submit it to your UniServ.

ESSA Point of Contact Form

Name: _____

Title: _____

School District: _____

ESSA Team Role: _____

Email Address: _____

Phone Number: _____

Return to your UniServ